

WHITEMAN PROPERTY



26 Sir Joseph Banks Drive Bateau Bay NSW

4 2 2

Step into this exceptional family home tucked away in a quiet street. This impressive property seamlessly blends spacious interiors, secluded outdoor entertainment areas, and a perfect mix of style and functionality. Prepare to impress your loved ones with this unique residence.

Upon entering, you'll be drawn to the open-plan layout that effortlessly connects the living, dining, and kitchen areas. The heart of the home, the kitchen, features stone benchtops, quality appliances, a breakfast bar, and serene views of the beautiful backyard, allowing you to keep an eye on your kids while they play.

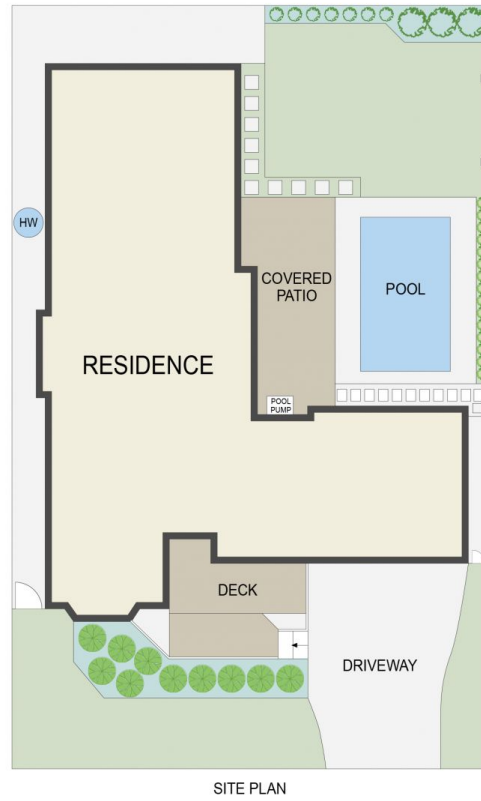
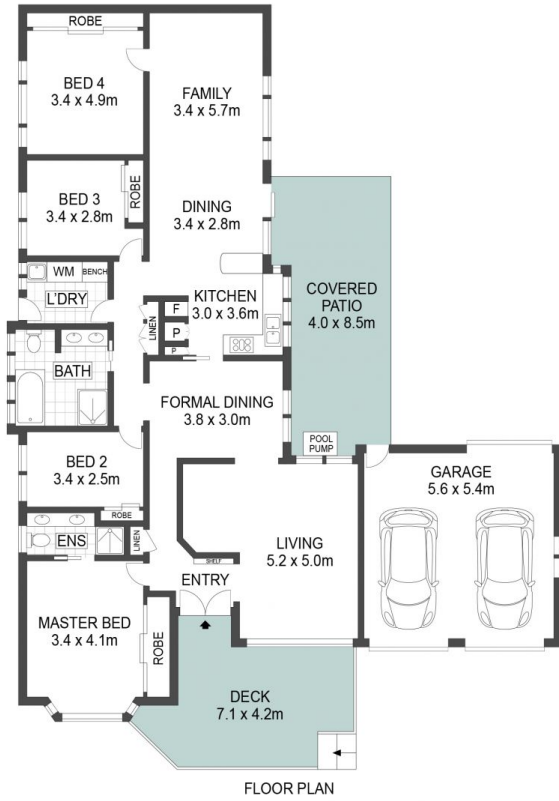
For those who love entertaining, a remarkable covered entertainment deck awaits, accessible through the dining

[For full version visit the website](https://www.whitemanproperty.com.au)

Type : House
Price : Contact Agent
Land Size : 575 sqm
View : <https://www.whitemanproperty.com.au/sale/nsw/central-coast-region/bateau-bay/residential/house/8166931>



Dan McLaren
02 4384 1349



APPROX. INT: 161m²
 APPROX. LAND: 575m²



THE INFORMATION CONTAINED IN THIS DOCUMENT HAS BEEN PROVIDED BY THIRD PARTIES. WHITEMAN PROPERTY HAS NOT CHECKED THE INFORMATION AND MERELY PASSES IT ON, NOT HAVING A BELIEF ONE WAY OR THE OTHER AS TO ITS ACCURACY. INTERESTED PARTIES SHOULD MAKE AND RELY UPON THEIR OWN ENQUIRIES.



26 Sir Joseph Banks Drive, Bateau Bay

WHITEMAN
PROPERTY