

# WHITEMAN PROPERTY



## 21 Wordsworth Avenue Bateau Bay NSW

4 2 1

Situated in a prime location, this original four-bedroom home offers endless possibilities for your imagination. With dual living areas on both levels, bright spaces, and plenty of charm, it's an incredible opportunity for those with vision and a desire to create something truly special.

The property sits on a generous 710sqm block, featuring established trees and rear lane access.

Just a short stroll to Bateau Bay Beach and Wyrabalong National Park, this home is ideal for families looking to embrace a coastal lifestyle, with local cafes, restaurants, and shopping nearby. It's a fantastic opportunity to renovate or build your dream home or capitalize on the adequate space and rear lane access to add a granny flat

[For full version visit the website](https://www.whitemanproperty.com.au/sale/nsw/central-coast-region/bateau-bay/residential/house/8151860)

**Type** : House  
**Price** : Contact Agent  
**Land Size** : 710 sqm  
**View** : <https://www.whitemanproperty.com.au/sale/nsw/central-coast-region/bateau-bay/residential/house/8151860>

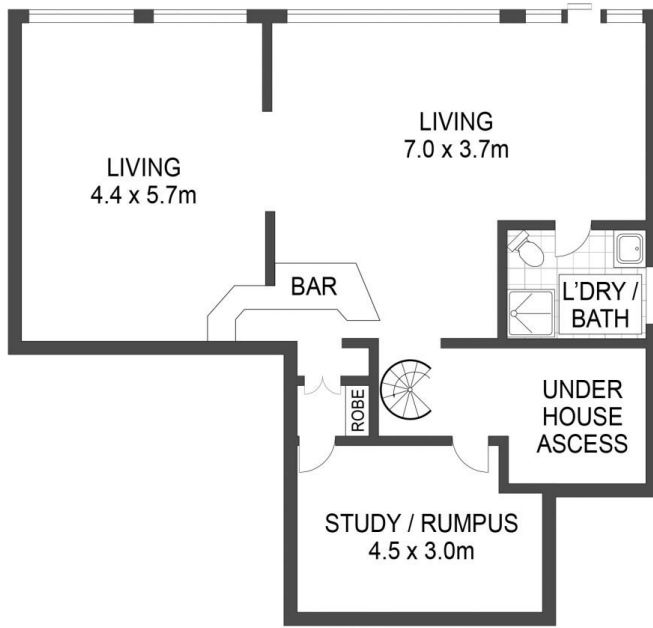


**Brian Whiteman**  
02 4384 1349

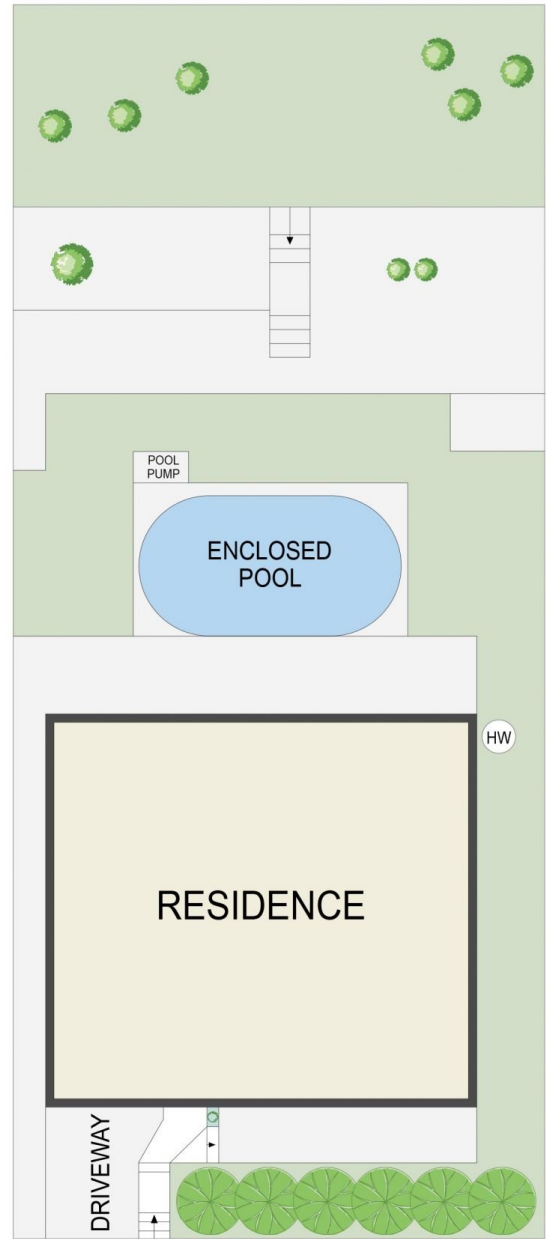


**Ricky Cavarra**  
02 4384 1349

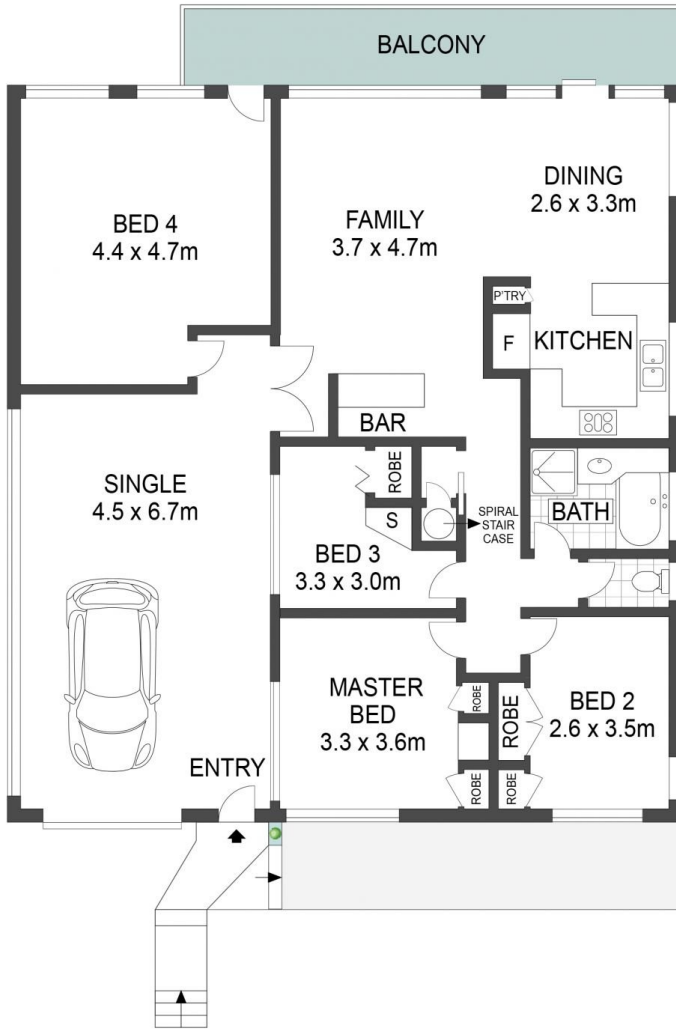
<https://www.whitemanproperty.com.au>



LOWER FLOOR



SITE PLAN



GROUND FLOOR

APPROX. INT: 224m<sup>2</sup>  
APPROX. LAND: 710m<sup>2</sup>



21 Wordsworth Avenue, Bateau Bay

WHITEMAN  
PROPERTY

THE INFORMATION CONTAINED IN THIS DOCUMENT HAS BEEN PROVIDED BY THIRD PARTIES. WHITEMAN PROPERTY HAS NOT CHECKED THE INFORMATION AND MERELY PASSES IT ON, NOT HAVING A BELIEF ONE WAY OR THE OTHER AS TO ITS ACCURACY. INTERESTED PARTIES SHOULD MAKE AND RELY UPON THEIR OWN ENQUIRIES.