

# WHITEMAN PROPERTY



## 13 Royle Street Chittaway Point NSW

4 3 2

Nestled in a peaceful lakeside cul-de-sac, this stunning property offers a unique lifestyle with breathtaking views of Tuggerah Lake. Meticulously crafted over two airy levels, the design incorporates large windows that perfectly frame the scenic water vistas. The expansive alfresco area invites you to unwind while overlooking a private glistening pool and beautifully maintained gardens.

**Type** : House  
**Price** : Contact Agent  
**Land Size** : 695 sqm  
**View** : <https://www.whitemanproperty.com.au/sale/nsw/central-coast-region/chittaway-point/residential/house/8147826>

Key features include:

- Open-plan living, kitchen, and dining areas flooded with natural light and stunning lake views
- A generous family kitchen at the heart of the home, featuring a stone benchtop, induction cooktop, and premium appliances

[For full version visit the website](https://www.whitemanproperty.com.au)

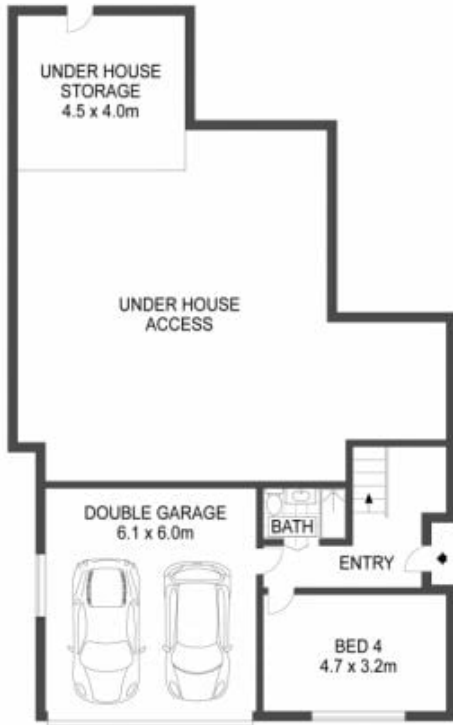


**Brian Whiteman**  
02 4384 1349



**Josh Froud**  
02 4384 1349

<https://www.whitemanproperty.com.au>



GROUND FLOOR



FIRST FLOOR



SITE PLAN

APPROX. INT: 316m<sup>2</sup>  
APPROX. LAND: 663m<sup>2</sup>



THE INFORMATION CONTAINED IN THIS DOCUMENT HAS BEEN PROVIDED BY THIRD PARTIES. WHITEMAN PROPERTY HAS NOT CHECKED THE INFORMATION AND MERELY PASSES IT ON WITHOUT HAVING A BELIEF ONE WAY OR THE OTHER AS TO ITS ACCURACY. INTERESTED PARTIES SHOULD MAKE AND RELY UPON THEIR OWN ENQUIRIES.



13 Royle Street, Chittaway Point

WHITEMAN  
PROPERTY