

WHITEMAN PROPERTY



2/32 Fraser Road Long Jetty NSW

3 3 2

Occupying a peaceful and private position in a boutique complex of just three and flooded with natural light, this north to rear townhouse is versatile and low maintenance located just minutes from Toowoona Bay beach and a short stroll down to Long Jetty's stunning sunsets, cafes and shopping.

Designed with a focus on fluid indoor/outdoor living, open plan dining and living extends seamlessly to a spacious undercover entertaining terrace perfect for entertaining family and friends.

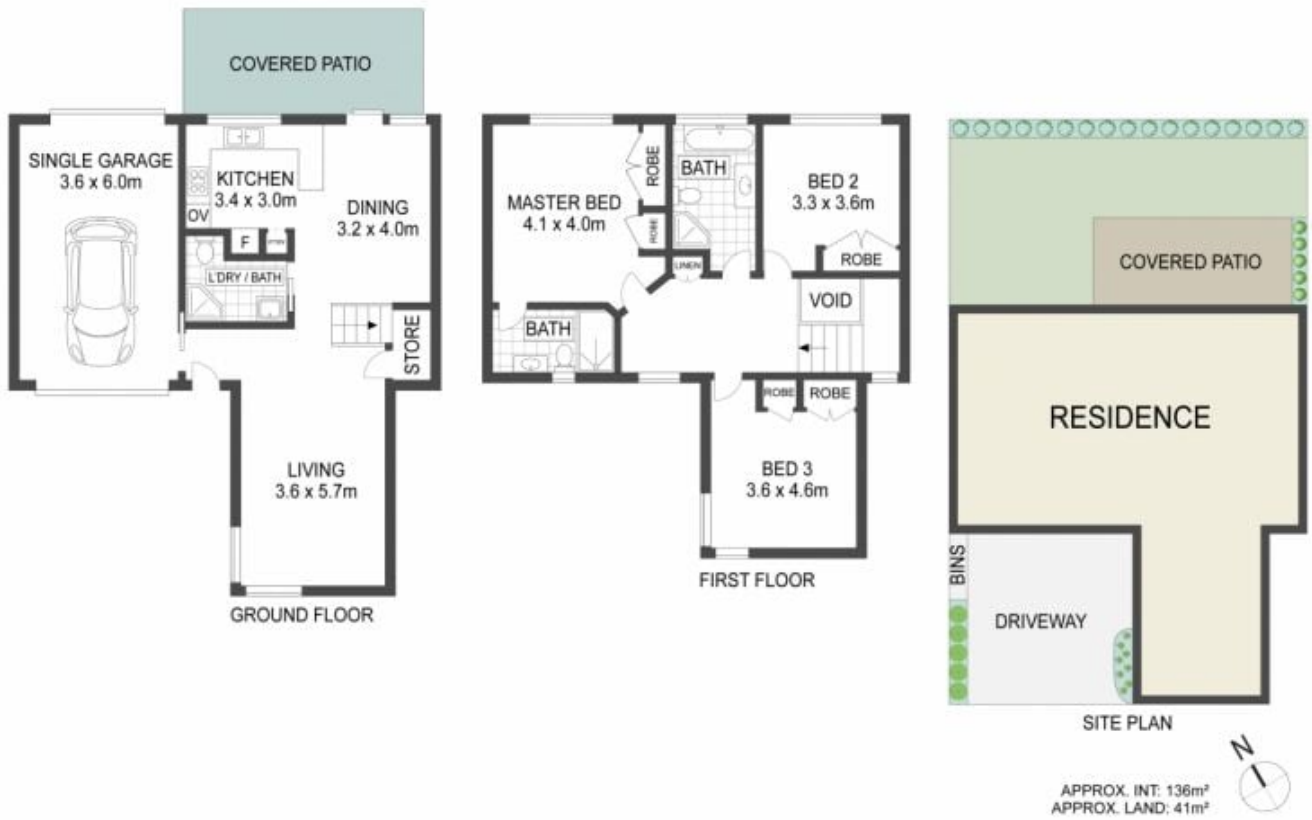
Perfect for a young family, investors or those looking to downsize without compromising on space and style, it features two parking spaces, internal laundry and three bathrooms

[For full version visit the website](https://www.whitemanproperty.com.au/sale/nsw/central-coast-region/long-jetty/residential/townhouse/8130225)

Type : Townhouse
Price : Guide \$890,000
Building Size : 136 sqm
View : <https://www.whitemanproperty.com.au/sale/nsw/central-coast-region/long-jetty/residential/townhouse/8130225>



Josh Froud
02 4384 1349



THE INFORMATION CONTAINED IN THIS DOCUMENT HAS BEEN PROVIDED BY THIRD PARTIES. WHITEMAN PROPERTY HAS NOT CHECKED THE INFORMATION AND MERELY PRESSES IT (OR AOT) HAVING A BELIEF ONE MAY OR THE OTHER AS TO ITS ACCURACY. INTERESTED PARTIES SHOULD MAKE AND RELY UPON THEIR OWN ENQUIRIES.



2/32 Fraser Road, Long Jetty

WHITEMAN
PROPERTY