



1 Highclere Street Bateau Bay NSW

5 🛏 2 🚿 1 🚗

Seize this rare investment opportunity: two homes on a spacious block in the desirable beachside suburb of Bateau Bay. The property features a three-bedroom freestanding home and a modern two-bedroom granny flat, offering the potential to rent both for a combined \$1,000 a week, live in one and rent the other to offset your mortgage, or accommodate multi-generational living with the perfect balance of closeness and privacy. With contemporary features and quality finishes throughout, this property ensures comfort and style in a prime location near shopping centres, top schools, and beautiful Central Coast beaches.

Main House

- Open lounge and dining flow to the generous fully fenced

[For full version visit the website](https://www.whitemanproperty.com.au)

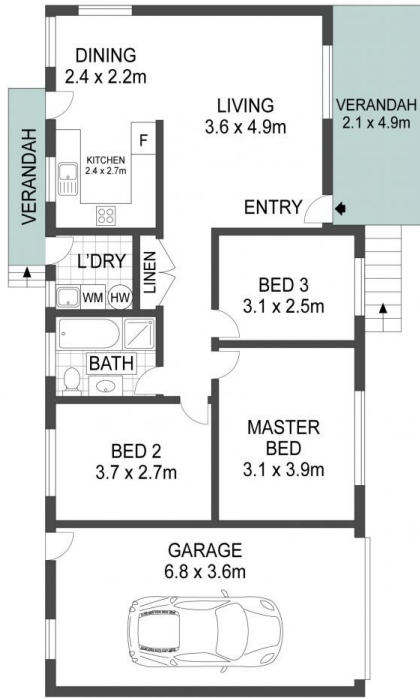
Type : House
Price : \$ 1,020,000
Land Size : 563 sqm
View : <https://www.whitemanproperty.com.au/sale/nsw/central-coast-region/bateau-bay/residential/house/8106645>



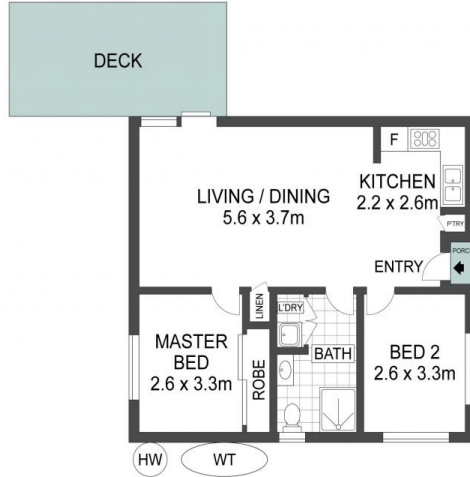
Josh Froud
02 4384 1349



Brian Whiteman
02 4384 1349



GROUND FLOOR



GRANNY FLAT



SITE PLAN

APPROX. INT: 154m²
APPROX. LAND: 563m²



THE INFORMATION CONTAINED IN THIS DOCUMENT HAS BEEN PROVIDED BY THIRD PARTIES. WHITEMAN PROPERTY HAS NOT CHECKED THE INFORMATION AND MERELY PASSES IT ON, NOT HAVING A BELIEF ONE WAY OR THE OTHER AS TO ITS ACCURACY. INTERESTED PARTIES SHOULD MAKE AND RELY UPON THEIR OWN ENQUIRIES.



1 Highclere Street, Bateau Bay

WHITEMAN
PROPERTY