

WHITEMAN PROPERTY



2 George Hely Crescent Killarney Vale NSW

4  2  2 

This is a wonderful opportunity to secure a sprawling residence perfectly set metres from Tuggerah Lake waterfront. You will be welcomed by landscaped gardens and a private entry. This tranquil sanctuary-like setting offers huge potential and versatility. The dual-level home is perfectly tailored for families. Minutes to great schooling, parklands and recreation areas, it delivers an idyllic lifestyle.

Blending modern comfort and relaxed living, the home opens to an impressive layout brimming with flexibility. Thoughtfully designed to maximise space, it presents a choice of living areas including a family lounge and generous family room which is perfect for entertaining with bar and easy flow to the outdoor entertaining areas.

[For full version visit the website](https://www.whitemanproperty.com.au)

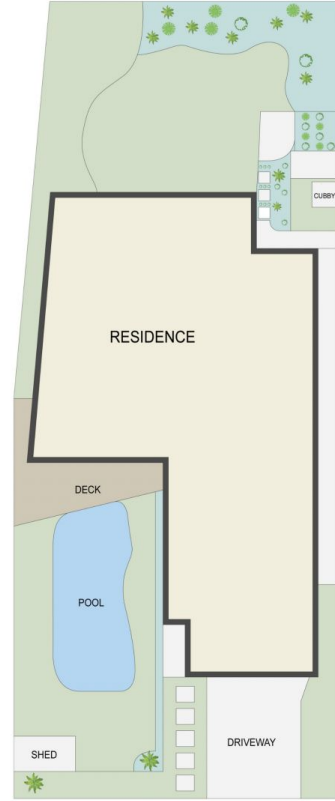
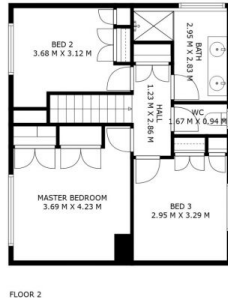
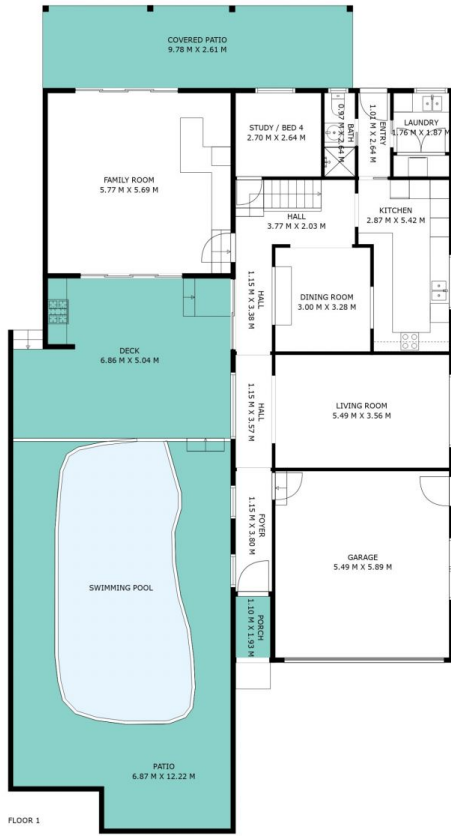
Type : House
Price : \$ 1,350,000
Land Size : 594 sqm
View : <https://www.whitemanproperty.com.au/sale/nsw/central-coast-region/killarney-vale/residential/house/8034723>



Brian Whiteman
02 4384 1349



Dan McLaren
02 4384 1349



APPROX. LAND: 594m²

THE INFORMATION CONTAINED IN THIS DOCUMENT HAS BEEN PROVIDED BY THIRD PARTIES. WHITEMAN PROPERTY HAS NOT CHECKED THE INFORMATION AND MERELY PASSES IT ON NOT HAVING A BELIEF ONE WAY OR THE OTHER AS TO ITS ACCURACY. INTERESTED PARTIES SHOULD MAKE AND RELY UPON THEIR OWN ENQUIRIES.



2 George Hely Crescent, Killarney Vale

