



16 Forest Oak Place Glenning Valley NSW

4 2 2

This luxurious, double-storey residence holds centre court within a new and premier pocket of Glenning Valley. Architecturally designed and constructed with meticulous attention to detail by McDonald Jones Homes the property is set in a quiet family friendly no through road.

Boasting a stunning entry with views of the resort style pool leading to a formal lounge exuding a feeling of sophistication with an easy flow through to the immaculate kitchen and meals area. Stone benchtops frame the gourmet kitchen which features a butler's pantry, gas cooktop, 900mm oven and a beautiful island bench setting. Glass doors offer seamless flow to entertaining on the rear alfresco which features travertine flooring and vergola roofing perfect for year-round entertaining. A true haven to

Type : House
Price : \$ 1,600,000
Land Size : 465 sqm
View : <https://www.whitemanproperty.com.au/sale/nsw/central-coast-region/glenning-valley/residential/house/8021954>

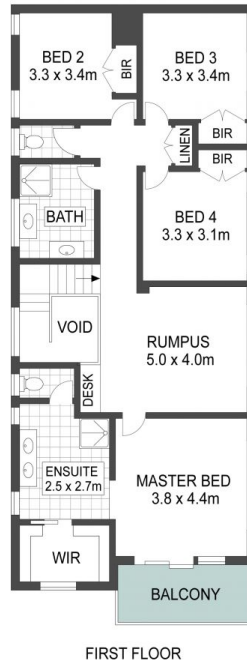
[For full version visit the website](https://www.whitemanproperty.com.au)



Brian Whiteman
02 4384 1349



Dan McLaren
02 4384 1349



APPROX. INT: 217m²
APPROX. LAND: 465m²



THE INFORMATION CONTAINED IN THIS DOCUMENT HAS BEEN PROVIDED BY THIRD PARTIES. WHITEMAN PROPERTY HAS NOT CHECKED THE INFORMATION AND MERELY PASSES IT ON, NOT HAVING A BELIEF ONE WAY OR THE OTHER AS TO ITS ACCURACY. INTERESTED PARTIES SHOULD MAKE AND RELY UPON THEIR OWN ENQUIRIES.



16 Forest Oak Place, Berkeley Vale

WHITEMAN
PROPERTY