



### 29 Cornish Avenue Killarney Vale NSW

5 2 2

A unique offering in a fast growing area that promotes effortless convenience, this alluring freestanding home presents so much opportunity. This single level home is located on a 575m2 corner block in a quiet street.

In addition to the three bedroom home it also offers a council approved secondary dwelling/granny flat for multi-purpose use such as extra rental income, home office or in-law accomodation/teenagers retreat. The interiors are fresh and bright.

Located only 6 minutes to Shelly Beach and moment to bike track, local schools, restaurants and cafes.

- Combined rental income \$940 per week
- Three good sized bedrooms.
- Council Approved granny flat.

[For full version visit the website](https://www.whitemanproperty.com.au)

**Type** : House  
**Price** : \$ 980,000  
**Land Size** : 575 sqm  
**View** : <https://www.whitemanproperty.com.au/sale/nsw/central-coast-region/killarney-vale/residential/house/7836810>



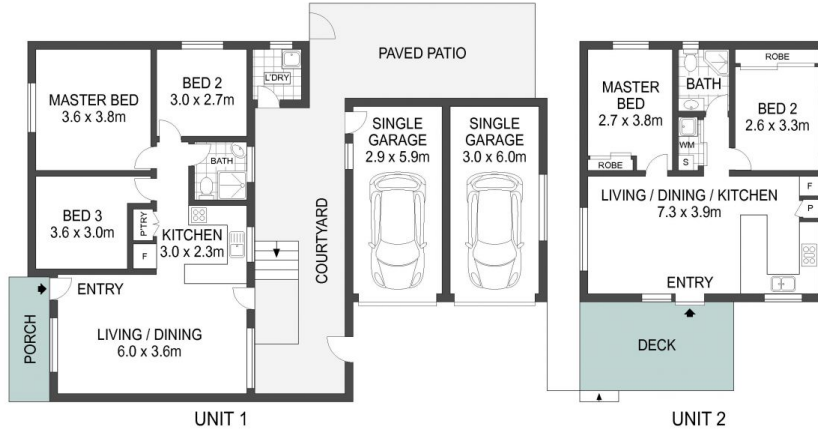
**Josh Froud**  
02 4384 1349



**Ricky Cavarra**  
02 4384 1349



SITE PLAN



APPROX. INT: 120m<sup>2</sup>  
APPROX. LAND: 575m<sup>2</sup>



THE INFORMATION CONTAINED IN THIS DOCUMENT HAS BEEN PROVIDED BY THIRD PARTIES. WHITEMAN PROPERTY HAS NOT CHECKED THE INFORMATION AND MERELY PASSES IT ON, NOT HAVING A BELIEF ONE WAY OR THE OTHER AS TO ITS ACCURACY. INTERESTED PARTIES SHOULD MAKE AND RELY UPON THEIR OWN ENQUIRIES.



29 Cornish Avenue, Killarney Vale

WHITEMAN  
PROPERTY