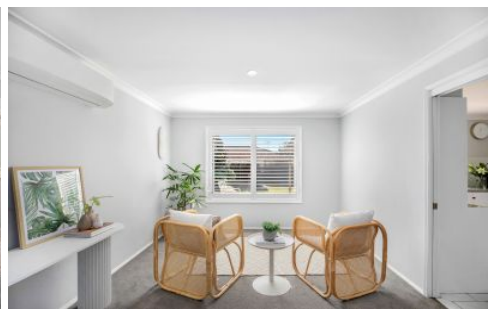


WHITEMAN PROPERTY



13 Macintyre Street BATEAU BAY NSW

5 3 2

Combining classic style with a generous layout this expansive residence presents flowing contemporary interiors with multiple living spaces and fantastic outdoor entertaining. Occupying a prime position in the family-friendly Estate, it's conveniently located close to great schools, shopping centres, parks and beaches.

- Freshly updated facade with manicured gardens and lawns
- Formal and informal living/dining and entertaining areas
- Immaculate gas kitchen with masses of storage space
- Five double bedrooms, master bedroom with ensuite
- All-weather alfresco entertaining area with built-in bbq kitchen
- Lush level lawns and low maintenance gardens; swim spa

[For full version visit the website](https://www.whitemanproperty.com.au)

Type : House
Land Size : 513.6 sqm
View : <https://www.whitemanproperty.com.au/sale/nsw/central-coast-region/bateau-bay/residential/house/7729729>

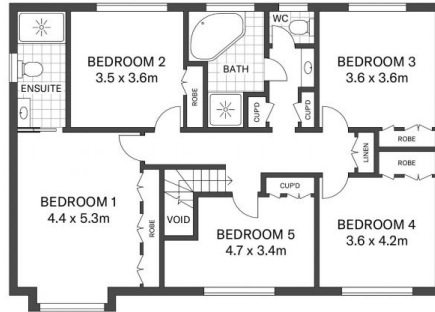


Brian Whiteman
02 4384 1349

<https://www.whitemanproperty.com.au>



GROUND FLOOR



FIRST FLOOR



SITE PLAN

APPROX. INT: 239.96m²
LAND: 513.6m²



THE INFORMATION CONTAINED IN THIS DOCUMENT HAS BEEN PROVIDED BY THIRD PARTIES. THE AGENCY HAS NOT CHECKED THE INFORMATION AND MERELY PASSES IT ON, NOT HAVING A BELIEF ONE WAY OR THE OTHER AS TO ITS ACCURACY. INTERESTED PARTIES SHOULD MAKE AND RELY UPON THEIR OWN ENQUIRIES.



13 Macintyre Street, Bateau Bay

THE AGENCY