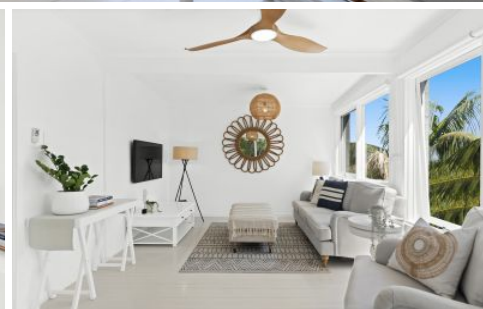


# WHITEMAN PROPERTY



## 9 Kipling Drive Bateau Bay NSW

4 🛏 3 🚿 2 🚗

Designed for unparalleled comfort and impressive family living, this impeccable home is a statement of superb quality and style. Boasting multiple living, dining and entertaining areas across two spacious levels with easy flow to outdoor entertaining deck and sunny rear yard. This beautiful home is light filled with the perfect use of over-sized windows and glass doors throughout.

Situated in a highly sought-after location and boasting a large and flexible floorplan over two levels, including a spacious separate one bedroom self-contained home with full kitchen and generous open plan lounge and dining that leads to outdoor patio. Perfect for guest accommodation or extra holiday Airbnb income with its own private entrance.

**Type** : House  
**Price** : \$ 1,470,000  
**Land Size** : 664 sqm  
**View** : <https://www.whitemanproperty.com.au/sale/nsw/central-coast-region/bateau-bay/residential/house/7412300>

[For full version visit the website](https://www.whitemanproperty.com.au)

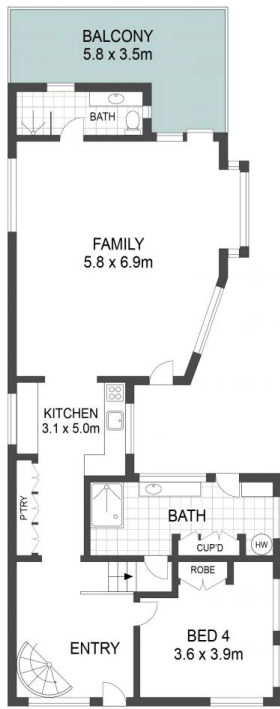


**Brian Whiteman**  
02 4384 1349

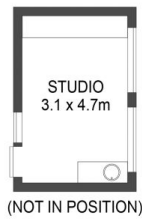


**Ricky Cavarra**  
02 4384 1349

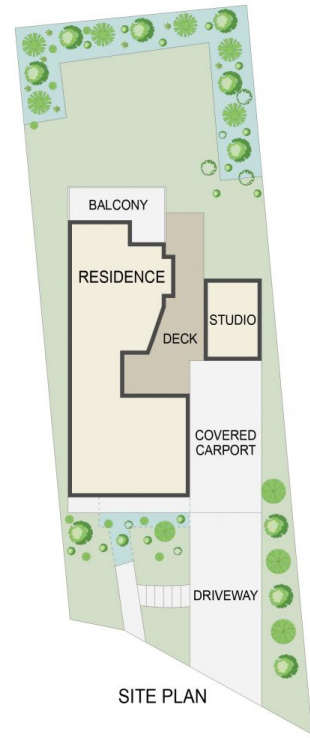
<https://www.whitemanproperty.com.au>



LOWER LEVEL



UPPER LEVEL



APPROX. INT: 256m<sup>2</sup>  
 APPROX. LAND: 664m<sup>2</sup>

THE INFORMATION CONTAINED IN THIS DOCUMENT HAS BEEN PROVIDED BY THIRD PARTIES. WHITEMAN PROPERTY HAS NOT CHECKED THE INFORMATION AND MERELY PASSES IT ON, NOT HAVING A BELIEF ONE WAY OR THE OTHER AS TO ITS ACCURACY. INTERESTED PARTIES SHOULD MAKE AND RELY UPON THEIR OWN ENQUIRIES.



9 Kipling Drive, Bateau Bay

WHITEMAN  
PROPERTY