

WHITEMAN

PROPERTY



3 Masfield Avenue Bateau Bay NSW

5 **3** **2**

This architecturally designed family home has been beautifully crafted blending modern comfort with spacious living and fantastic outdoor entertaining areas with district leafy and water views. Perfectly set in the premium location of poets corner on an easy-care 601sqm block. Surrounded by a scenic outlook captured through over-sized windows throughout, this home will leave you with a sense of space and serenity. Capturing cool ocean breezes from two generous levels including an all weather deck perfect for entertaining. The sun filled lower level draws you into an open plan living, dining flowing to outdoor entertaining. The upper level leads into 3 spacious bedrooms plus a separate study or 4th bedroom. Perfectly set in an idyllic and sought after location and just minutes to Bateau Bay Beach & Wyrabalong walking trails.

[For full version visit the website](https://www.whitemanproperty.com.au/sale/nsw/central-coast-region/bateau-bay/residential/house/7344059)

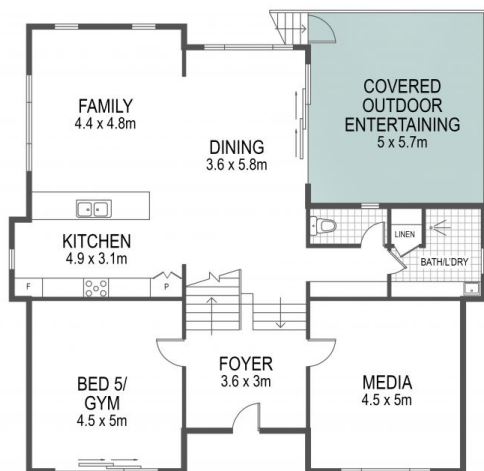
Type : House
Land Size : 601 sqm
View : <https://www.whitemanproperty.com.au/sale/nsw/central-coast-region/bateau-bay/residential/house/7344059>



Brian Whiteman
02 4384 1349



Ricky Cavarra
02 4384 1349



GROUND FLOOR



FIRST FLOOR



SITE PLAN

APPROX. INT: 276m²
APPROX. LAND: 601m²



THE INFORMATION CONTAINED IN THIS DOCUMENT HAS BEEN PROVIDED BY THIRD PARTIES. WHITEMAN PROPERTY HAS NOT CHECKED THE INFORMATION AND MERELY PASSES IT ON, NOT HAVING A BELIEF ONE WAY OR THE OTHER AS TO ITS ACCURACY. INTERESTED PARTIES SHOULD MAKE AND RELY UPON THEIR OWN ENQUIRIES.



3 Masfield Avenue, Bateau Bay

WHITEMAN
PROPERTY