






33 Mermaid Drive Bateau Bay NSW

4  2  1 

Positioned in a quiet street, this solid family home offers space, privacy and versatility with a scenic outlook. Set on a picturesque 556sqm block, this well located home offers an idyllic coastal lifestyle for families and is just moments to local beaches, public/private schools and waterfront eateries.

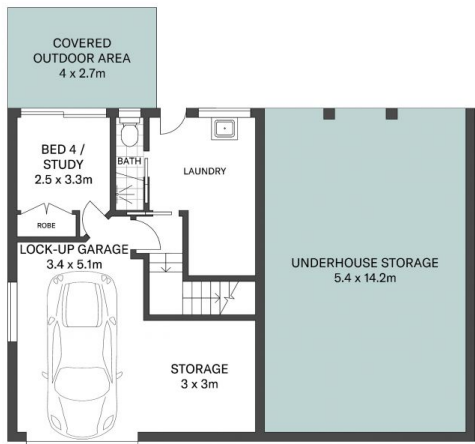
- Versatile open floorplan offers a selection of living zones over both levels
- Light filled interiors create an inclusive family atmosphere
- Modern kitchen showcases stainless appliances and scenic outlook
- Generous sunny entertaining deck overlooks backyard
- Good sized bedrooms appointed with built-in wardrobes
- Massive north to rear backyard with plenty of space for a

[For full version visit the website](https://www.whitemanproperty.com.au)

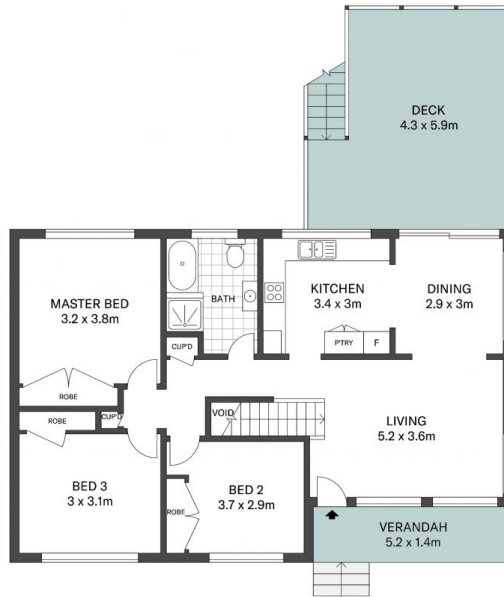
Type : House
Price : \$ 900,000
Land Size : 556 sqm
View : <https://www.whitemanproperty.com.au/sale/nsw/central-coast-region/bateau-bay/residential/house/7306442>



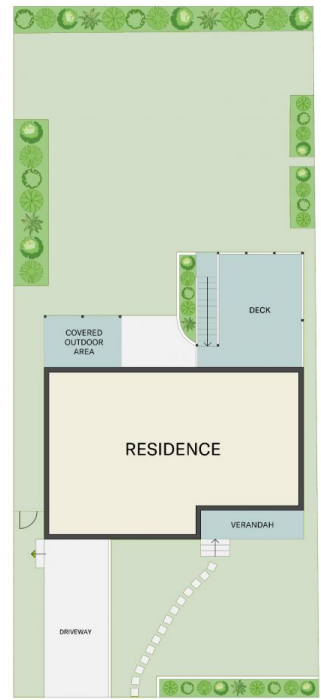
Josh Froud
02 4384 1349



LOWER GROUND FLOOR



GROUND FLOOR



SITE PLAN

APPROX. INT: 156 m²
LAND: 556 m²



THE INFORMATION CONTAINED IN THIS DOCUMENT HAS BEEN PROVIDED BY THIRD PARTIES. THE AGENCY HAS NOT CHECKED THE INFORMATION AND MERELY PASSES IT ON, NOT HAVING A BELIEF ONE WAY OR THE OTHER AS TO ITS ACCURACY. INTERESTED PARTIES SHOULD MAKE AND RELY UPON THEIR OWN ENQUIRIES.



33 Mermaid Drive, Bateau Bay

WHITEMAN
PROPERTY