

WHITEMAN PROPERTY



26 Kipling Drive Bateau Bay NSW

3 2 2

Basking in stunning district and lake views from the high side of a quiet street, this dual level residence invites you to enjoy a tranquil indoor/outdoor lifestyle in a scenic address. It's situated on a generous 556sqm block, a walk to bus services and waterfront parks while handy to shops, bars, restaurants and several beaches.

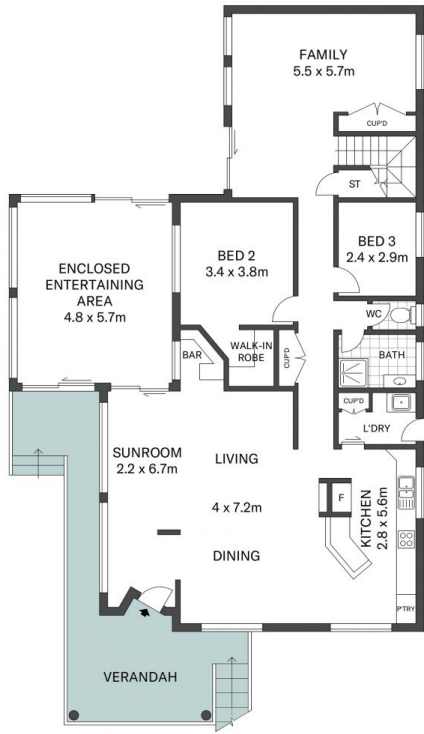
- Choice of living spaces includes an open plan lounge and dining zone with bar
- Enclosed entertaining area extends to sunlit swimming in landscaped surrounds
- Elevated verandah embracing gorgeous views plus lush rear and front gardens
- Original gas kitchen features stainless steel cooktop, oven and dishwasher

[For full version visit the website](https://www.whitemanproperty.com.au/sale/nsw/central-coast-region/bateau-bay/residential/house/7247077)

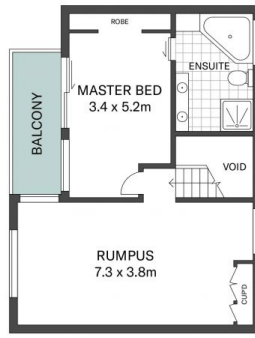
Type : House
Price : \$ 1,000,000
Land Size : 556 sqm
View : <https://www.whitemanproperty.com.au/sale/nsw/central-coast-region/bateau-bay/residential/house/7247077>



Simon Mitrovich
02 4384 1349



GROUND FLOOR



FIRST FLOOR



SITE PLAN

APPROX. INT: 230m²
 LAND: 556m²



THE INFORMATION CONTAINED IN THIS DOCUMENT HAS BEEN PROVIDED BY THIRD PARTIES. THE AGENCY HAS NOT CHECKED THE INFORMATION AND MERELY PASSES IT ON, NOT HAVING A BELIEF ONE WAY OR THE OTHER AS TO ITS ACCURACY. INTERESTED PARTIES SHOULD MAKE AND RELY UPON THEIR OWN ENQUIRIES.



26 Kipling Drive, Bateau Bay

WHITEMAN
 PROPERTY