

WHITEMAN PROPERTY



43 Dover Road Wamberal NSW

4 3 1

Set on the high side of the street on a large 677sqm block of sundrenched land with views across Wamberal Lagoon to Terrigal. This solid tri-level brick and tile home presents the perfect opportunity for those seeking space and a beachside lifestyle. Extremely well maintained and freshly updated with a flexible floorplan offering opportunity to configure to the needs of your family in a highly sought after and tightly held dress circle location.

- Elevated over three levels with panoramic views through to Terrigal
- Enormous living areas with indoor/outdoor easy flow
- Large timber kitchen with plenty of storage, adjacent dining flows to deck
- Master bedroom with ensuite, great views to Terrigal

[For full version visit the website](https://www.whitemanproperty.com.au)

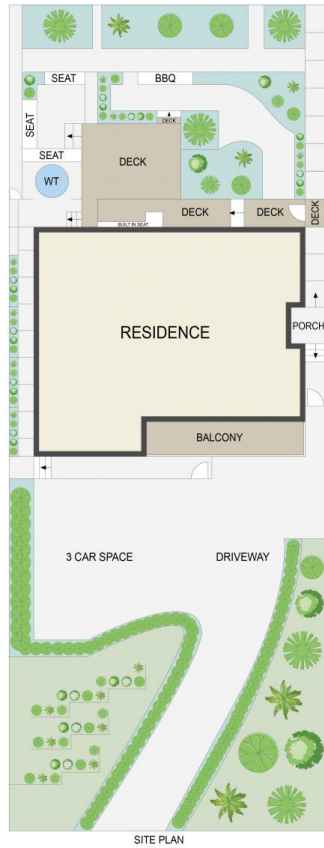
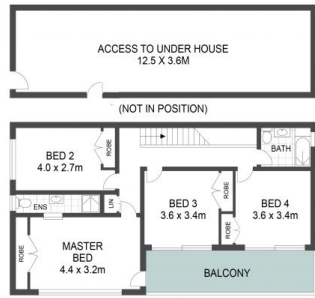
Type : House
Land Size : 677 sqm
View : <https://www.whitemanproperty.com.au/sale/nsw/central-coast-region/wamberal/residential/house/7216897>



Brian Whiteman
02 4384 1349



Ricky Cavarra
02 4384 1349



APPROX. INT: 272m²
 APPROX. LAND: 677m²



THE INFORMATION CONTAINED IN THIS DOCUMENT HAS BEEN PROVIDED BY THIRD PARTIES. THE AGENCY HAS NOT CHECKED THE INFORMATION AND MERELY PASSES IT ON, NOT HAVING A BELIEF ONE WAY OR THE OTHER AS TO ITS ACCURACY. INTERESTED PARTIES SHOULD MAKE AND RELY UPON THEIR OWN ENQUIRIES.

W 43 Dover Road, Wamberal

WHITEMAN
PROPERTY