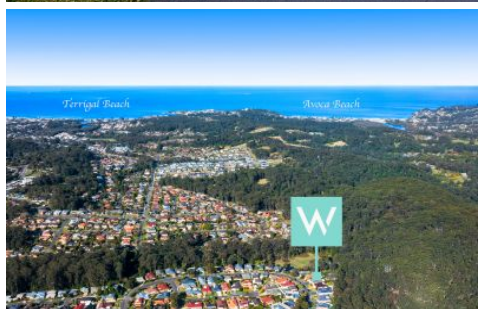


# WHITEMAN PROPERTY



## 43 Thames Drive Erina NSW

5 3 4

Privately set on an elevated north facing block of land backing onto reserve, this immaculate home boasts a spacious floorplan and great accommodation for large families. Situated close to Erina fair and local schools with easy access to public transport and a short drive to Terrigal beach.

- Set on the high side of the street with stunning street appeal and manicured gardens
- Light and bright open plan living/dining and entertaining areas with high ceilings
- Easy flow to covered entertainment deck and manicured rear gardens with pergola
- Master bedroom with ensuite and walk-in robe, 5th bed/office adjacent to garage

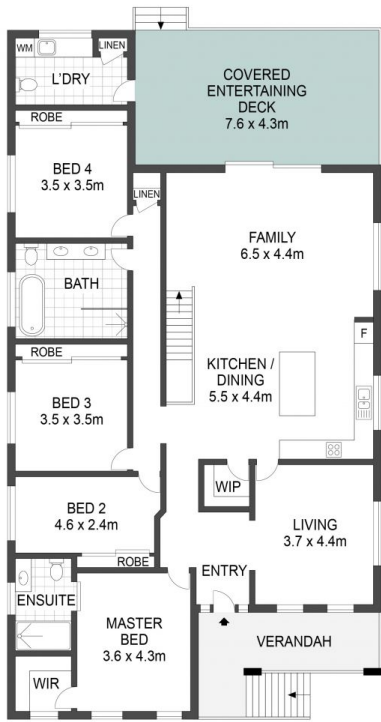
[For full version visit the website](https://www.whitemanproperty.com.au)

**Type** : House  
**Price** : \$ 1,400,000  
**Land Size** : 551 sqm  
**View** : <https://www.whitemanproperty.com.au/sale/nsw/central-coast-region/erina/residential/home/7165860>

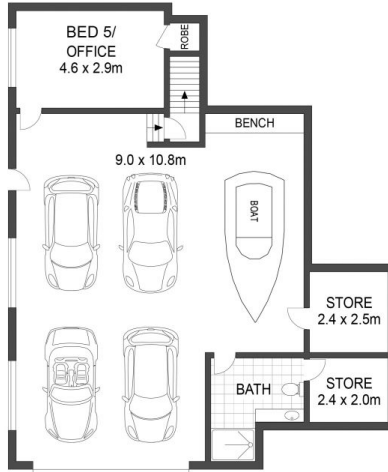


**Simon Mitrovich**  
02 4384 1349

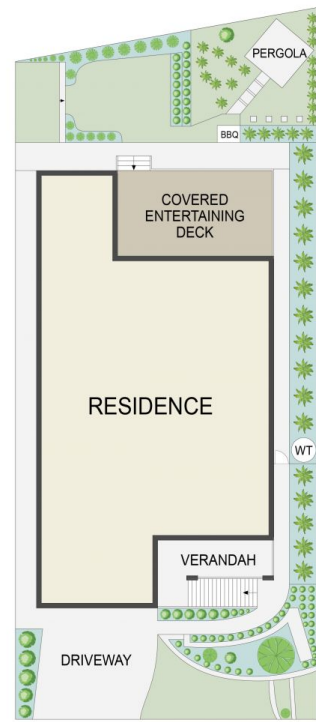
<https://www.whitemanproperty.com.au>



UPPER LEVEL



LOWER LEVEL



SITE PLAN

APPROX. INT: 311m<sup>2</sup>  
APPROX. LAND: 551m<sup>2</sup>



THE INFORMATION CONTAINED IN THIS DOCUMENT HAS BEEN PROVIDED BY THIRD PARTIES. THE AGENCY HAS NOT CHECKED THE INFORMATION AND MERELY PASSES IT ON, NOT HAVING A BELIEF ONE WAY OR THE OTHER AS TO ITS ACCURACY. INTERESTED PARTIES SHOULD MAKE AND RELY UPON THEIR OWN ENQUIRIES.



43 Thames Drive, Erina

WHITEMAN  
PROPERTY