

WHITEMAN PROPERTY



11 Prince Street WAMBERAL NSW

4  3  2 

Set on the high side of the street on a large 663sqm block of sundrenched land with panoramic ocean views, this solid two level brick and tile home presents the perfect opportunity for those seeking a fantastic beachside lifestyle. Extremely well maintained and perfectly liveable now with a flexible floorplan offering opportunity to renovate, update or extend to further capitalise on this great family home in a highly sought after and tightly held Wamberal pocket, footsteps to the beach.

- Elevated over two levels with panoramic ocean views to Terrigal
- Enormous living areas with easy flow to terrace to enjoy the seabreeze and ocean views
- Flexible floorplan with additional downstairs in-law

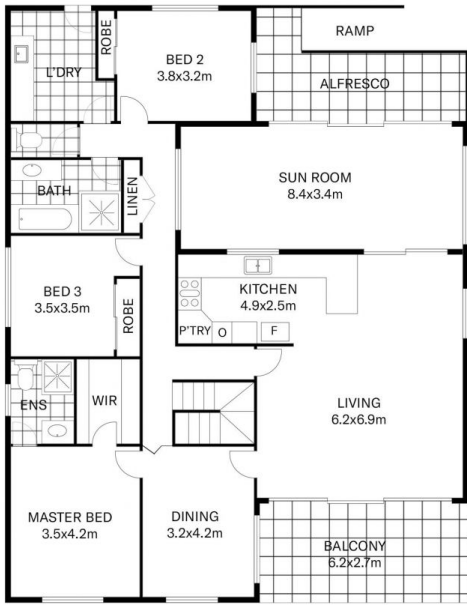
[For full version visit the website](https://www.whitemanproperty.com.au)

Type : House
Land Size : 663 sqm
View : <https://www.whitemanproperty.com.au/sale/nsw/central-coast-region/wamberal/residential/house/7088560>

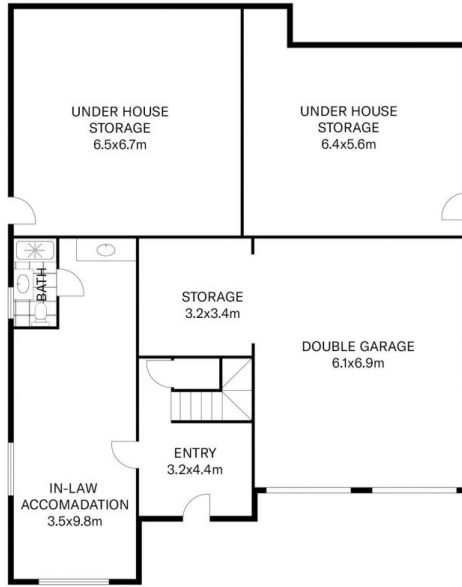


Brian Whiteman
02 4384 1349

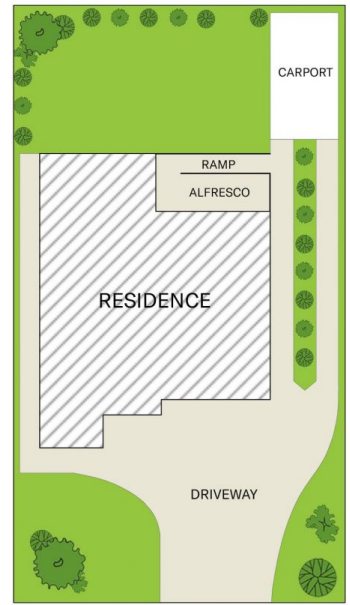
<https://www.whitemanproperty.com.au>



FIRST FLOOR PLAN



GROUND FLOOR PLAN



SITE PLAN



INTERNAL FLOOR AREA 281m²
 LAND SIZE 663m²

Indicative only. All dimensions and element positions are approximate. Information on this plan comes from sources we believe to be accurate, but its accuracy is not guaranteed. Interested parties should make and rely on their own inquiries

 11 Prince Street Wamberal NSW 2260

THE AGENCY