

# WHITEMAN PROPERTY



## 9 Plymouth Drive WAMBERAL NSW

4 2 2

Located in a tightly held pocket amongst other quality homes, this outstanding property showcases a distinctive and versatile residence with fresh modern finishes, open plan living and superb outdoor entertaining. Set on a large 828sqm parcel of land perfectly located just 350m to golf and Country Club, and a short drive to shops, cafes, Wamberal Lagoon and fabulous beaches.

- Welcoming two storey facade with formal entry foyer
- Separate downstairs living area and private master bedroom
- Light-filled open plan kitchen and family area; formal dining
- Enormous wrap around entertainment deck with district views
- Three bedrooms on the upper level with central bathroom

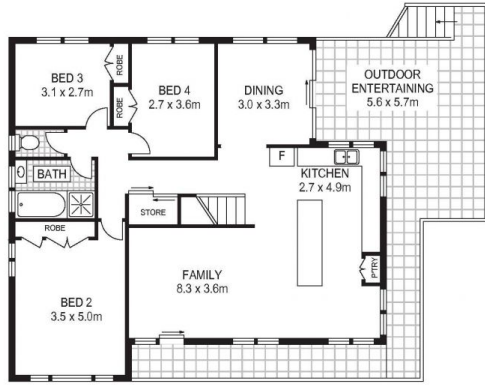
[For full version visit the website](https://www.whitemanproperty.com.au/sale/nsw/central-coast-region/wamberal/residential/house/7088243)

**Type** : House  
**Building Size** : 22 sqm  
**Land Size** : 828 sqm  
**View** : <https://www.whitemanproperty.com.au/sale/nsw/central-coast-region/wamberal/residential/house/7088243>

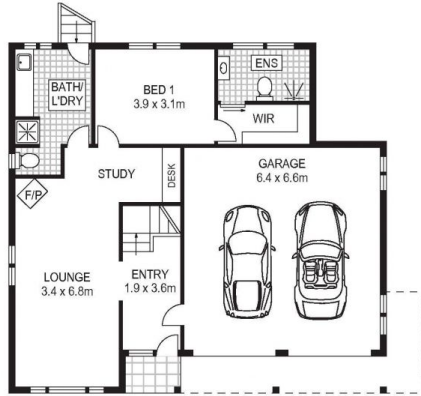


**Brian Whiteman**  
02 4384 1349

<https://www.whitemanproperty.com.au>

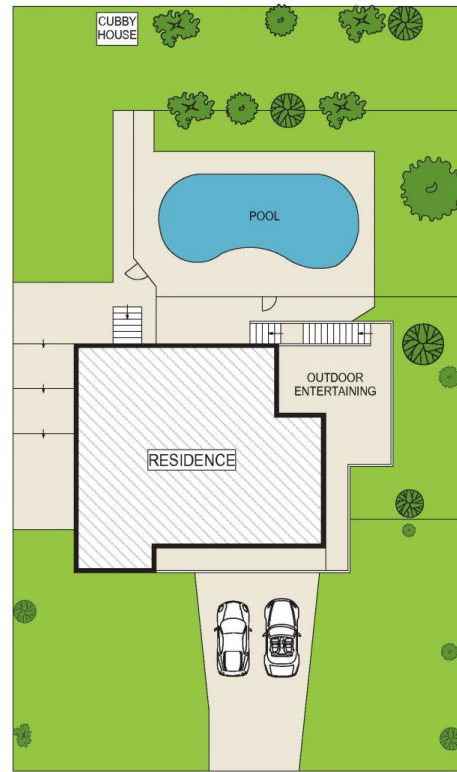


FIRST FLOOR



GROUND FLOOR

INTERNAL FLOOR AREA 225 m<sup>2</sup>  
LAND SIZE 829 m<sup>2</sup>



SITE PLAN



Indicative only. All dimensions and element positions are approximate. Information on this plan comes from sources we believe to be accurate, but its accuracy is not guaranteed. Interested parties should make and rely on their own inquiries

 9 Plymouth Drive, Wamberal

THE  AGENCY