

WHITEMAN PROPERTY



24 Florida Street THE ENTRANCE NORTH NSW

2 2 1

Perfectly situated just a 200m stroll to North Entrance beach, this lovingly maintained two bedroom cottage is set on a 575 sqm block of North to rear land and provides comfort and opportunity for those seeking the ultimate beachside lifestyle. With picturesque picket fence street appeal, cosy interiors and sun-drenched back yard. Perfect for holidaymakers, downsizers or first home buyers to buy now, renovate later or those seeking to knock down and rebuild your dream beach house.

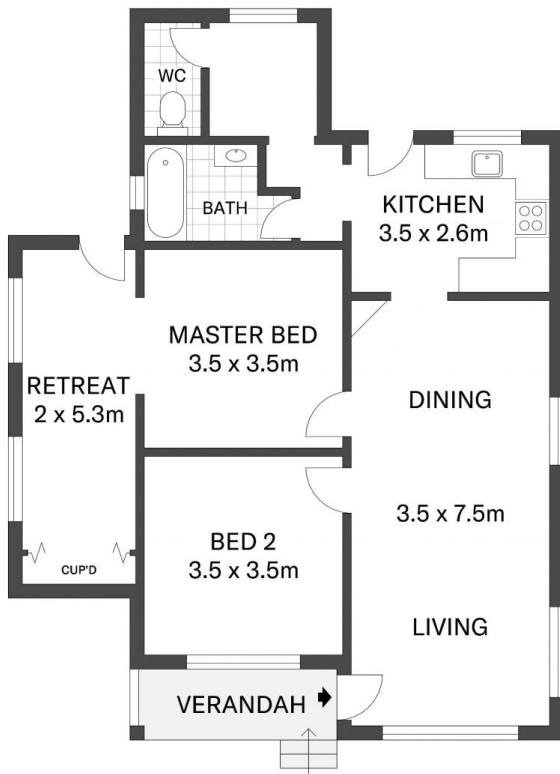
- Gorgeous wide fronted (15m) street appeal with side drive to garage/studio
- Light-filled open plan living/dining flows to the kitchen and rear yard
- Fresh interiors, polished floorboards, r/c air con for

[For full version visit the website](https://www.whitemanproperty.com.au)

Type : House
Land Size : 575 sqm
View : <https://www.whitemanproperty.com.au/sale/nsw/central-coast-region/the-entrance-north/residential/house/7087480>




Brian Whiteman
02 4384 1349



APPROX. EXT: 89m²
LAND: 575m²



THE INFORMATION CONTAINED IN THIS DOCUMENT HAS BEEN PROVIDED BY THIRD PARTIES. THE AGENCY HAS NOT CHECKED THE INFORMATION AND MERELY PASSES IT ON, NOT HAVING A BELIEF ONE WAY OR THE OTHER AS TO ITS ACCURACY. INTERESTED PARTIES SHOULD MAKE AND RELY UPON THEIR OWN ENQUIRIES.

 24 Florida Street, The Entrance North

THE AGENCY