

WHITEMAN PROPERTY



38 Florida Street THE ENTRANCE NORTH NSW

5 3 5

Boasting one of The Entrance North's best addresses, this superb coastal beach house just 100m to the sand offers a luxury lifestyle highly sought and seldom found. Boasting contemporary finishes throughout and ample accommodation for the whole family including four separate living areas plus two studies. Perfect for families, holidaymakers or retirees seeking a relaxed lifestyle by the sea, with a short stroll to beach, lake, and shopping village.

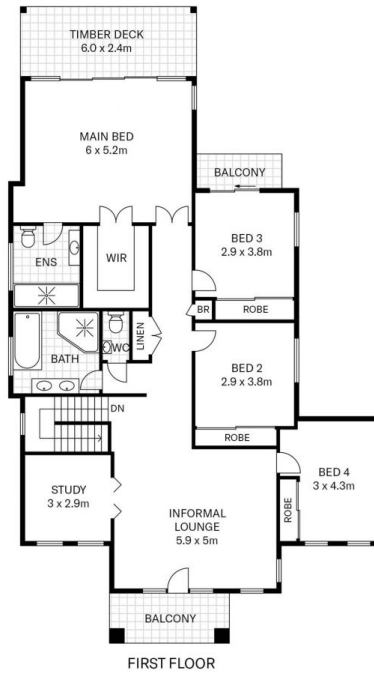
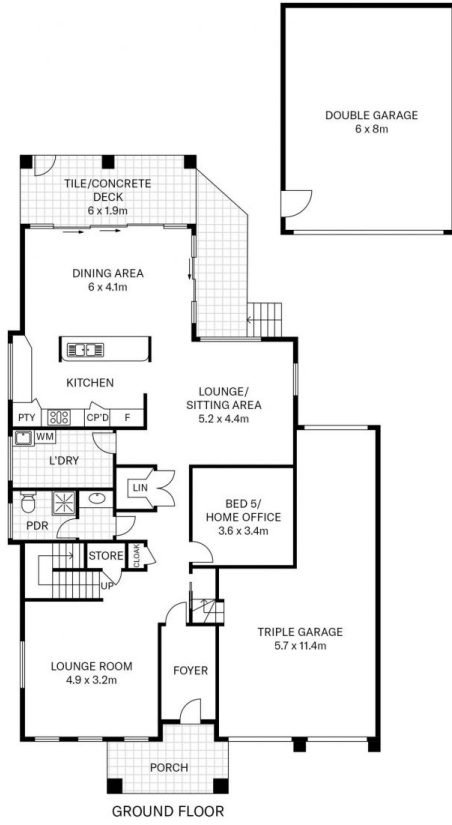
- Stunning street appeal just 100m to beach access
- Light and bright in neutral coastal tones that complement its natural setting
- Gourmet kitchen with gas cooktop, central island bench, pantry
- Enormous casual living/dining area flows to alfresco

[For full version visit the website](https://www.whitemanproperty.com.au)

Type : House
Land Size : 575 sqm
View : <https://www.whitemanproperty.com.au/sale/nsw/central-coast-region/the-entrance-north/residential/house/7087479>



Brian Whiteman
02 4384 1349



INTERNAL FLOOR AREA 343.63m²
 LAND SIZE 580m²

Indicative only. All dimensions and element positions are approximate. Information on this plan comes from sources we believe to be accurate, but its accuracy is not guaranteed. Interested parties should make and rely on their own inquiries

 38 Florida Street The Entrance North NSW 2261

THE AGENCY