

WHITEMAN

PROPERTY



25 Atkinson Road MOUNT ELLIOT NSW

7 3 7

Positioned on 8 acres of land and enjoying beautiful bushland reserve outlooks, from every window in the house, this contemporary home delivers a 1,376sqm, versatile and functional floorplan, including multiple living zones, expansive entertainment spaces, together with private balconies, ideal for a growing and extended family to enjoy.

- Family friendly neighbourhood with a welcoming and social community spirit
- Flexible floorplan lends itself to accommodate two separate families, dual entrances
- Solar heated undercover swimming pool, heat pump for year round swimming
- Two spa baths; sauna; 3 bathrooms plus 2 additional WC's

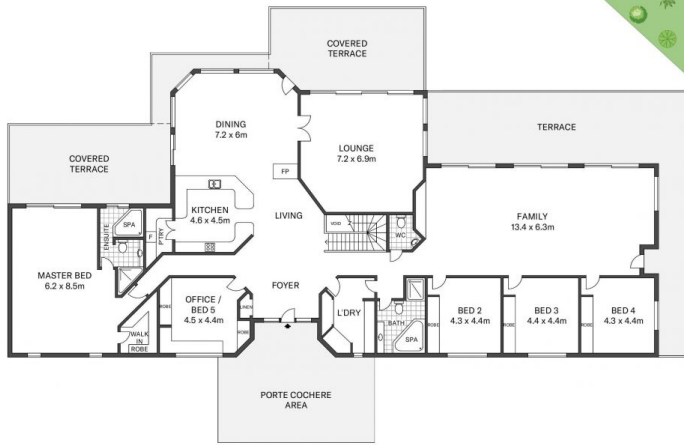
[For full version visit the website](https://www.whitemanproperty.com.au/sale/nsw/central-coast-region/mount-elliott/residential/acreagesemirural/7084263)

Type : Acreage/Semi-Rural
Building Size : 148 sqm
Land Size : 33090 sqm
View : <https://www.whitemanproperty.com.au/sale/nsw/central-coast-region/mount-elliott/residential/acreagesemirural/7084263>

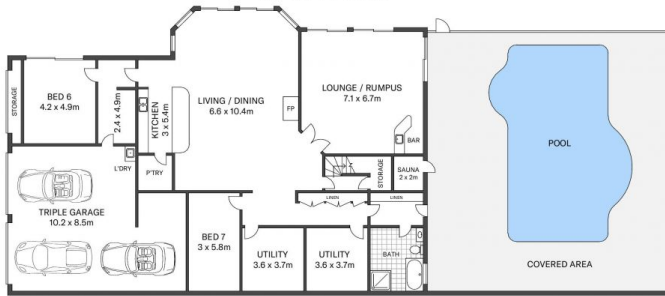


Brian Whiteman
02 4384 1349

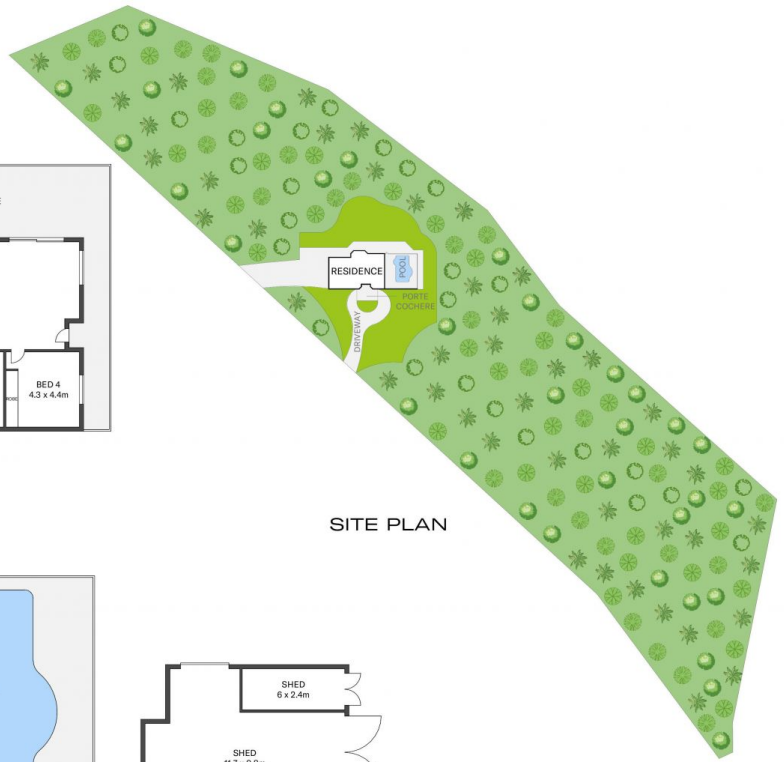
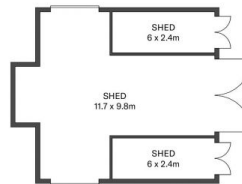
<https://www.whitemanproperty.com.au>



LEVEL ONE



GROUND FLOOR



SITE PLAN

APPROX. INT: 1,376m²
LAND: 31,896m²



THE INFORMATION CONTAINED IN THIS DOCUMENT HAS BEEN PROVIDED BY THIRD PARTIES. THE AGENCY HAS NOT CHECKED THE INFORMATION AND MERELY PASSES IT ON, NOT HAVING A BELIEF ONE WAY OR THE OTHER AS TO ITS ACCURACY. INTERESTED PARTIES SHOULD MAKE AND RELY UPON THEIR OWN ENQUIRIES.



25 Atkinson Road, Mount Elliot

THE AGENCY