

# WHITEMAN PROPERTY



**2 Fraser Road LONG JETTY NSW**

3 2 2

This sensational property is centrally located in the "Golden Triangle" between the boutique shops and cafes of Long Jetty and the beautiful shores of Shelly Beach, Blue Bay Beach and Toowoyn Bay, affording a lifestyle of everyday convenience. A fantastic opportunity to secure a recently updated Hamptons inspired home with the bonus of a recently completed garage conversion for in-law accommodation. Perfect for families, first home buyers or those seeking a property with future potential to rebuild and capitalise on a fantastic beachside location.

- Freshly updated light-filled interiors, polished floorboards, plantation shutters
- Modern open plan kitchen with stone benchtops adjoins

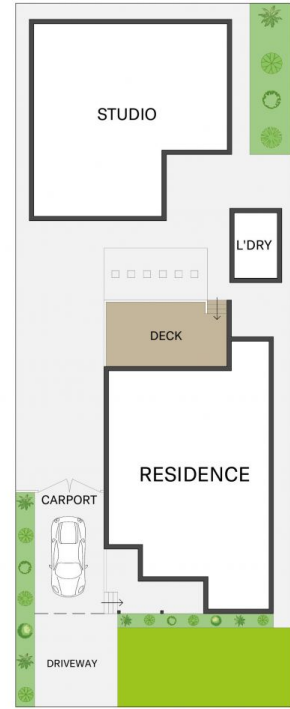
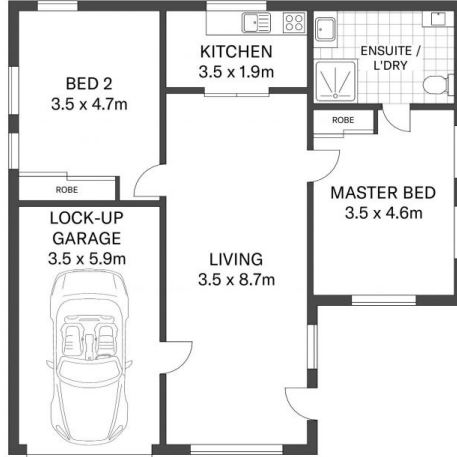
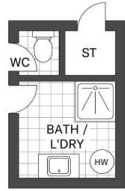
[For full version visit the website](https://www.whitemanproperty.com.au/sale/nsw/central-coast-region/long-jetty/residential/house/7084227)

**Type** : House  
**Building Size** : 13 sqm  
**Land Size** : 601 sqm  
**View** : <https://www.whitemanproperty.com.au/sale/nsw/central-coast-region/long-jetty/residential/house/7084227>



**Brian Whiteman**  
02 4384 1349

<https://www.whitemanproperty.com.au>



SITE PLAN

APPROX. INT: 221m<sup>2</sup>  
 APPROX. EXT: 480m<sup>2</sup>  
 LAND: 601m<sup>2</sup>



THE INFORMATION CONTAINED IN THIS DOCUMENT HAS BEEN PROVIDED BY THIRD PARTIES. THE AGENCY HAS NOT CHECKED THE INFORMATION AND MERELY PASSES IT ON, NOT HAVING A BELIEF ONE WAY OR THE OTHER AS TO ITS ACCURACY. INTERESTED PARTIES SHOULD MAKE AND RELY UPON THEIR OWN ENQUIRIES.

 2 Fraser Road, Long Jetty

THE AGENCY