




# WHITEMAN PROPERTY



**70 Anzac Road LONG JETTY NSW**

4  2  1 

This stunning home has been designed with a focus on comfort, contemporary elegance and suburb entertaining. Providing dedicated living options over a single level, with a natural flow to the sensational pool and covered entertaining. Ideally situated in a central location, level walk to Shelly Beach and Golf Club, Long Jetty Foreshore, shops and cafes, this home is the epitome of tranquil coastal living.

- Contemporary coastal facade creates stunning street appeal
- Entertainer's kitchen with stone island bench creates a central hub
- Modern and stylish living and dining space for gatherings
- Stack sliding doors create an open flow to the north-facing

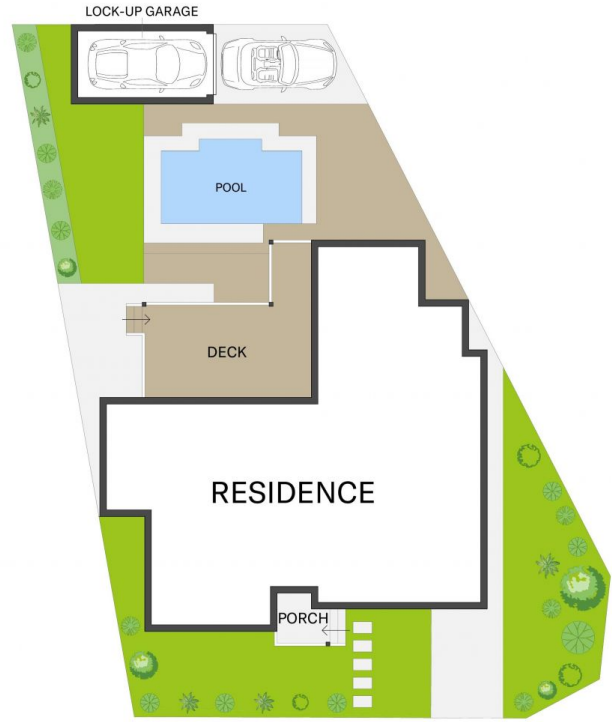
[For full version visit the website](https://www.whitemanproperty.com.au)

**Type** : House  
**Price** : \$ 1,250,000  
**View** : <https://www.whitemanproperty.com.au/sale/nsw/central-coast-region/long-jetty/residential/house/7084225>



**Brian Whiteman**  
**02 4384 1349**

<https://www.whitemanproperty.com.au>



SITE PLAN

APPROX. INT: 169m<sup>2</sup>  
 LAND: 538m<sup>2</sup>



 70 Anzac Road, Long Jetty

THE AGENCY

THE INFORMATION CONTAINED IN THIS DOCUMENT HAS BEEN PROVIDED BY THIRD PARTIES. THE AGENCY HAS NOT CHECKED THE INFORMATION AND MERELY PASSES IT ON, NOT HAVING A BELIEF ONE WAY OR THE OTHER AS TO ITS ACCURACY. INTERESTED PARTIES SHOULD MAKE AND RELY UPON THEIR OWN ENQUIRIES.