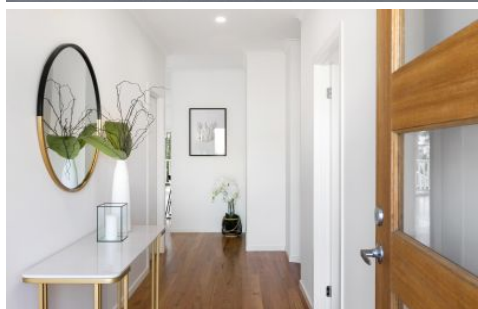


WHITEMAN PROPERTY



4A Anzac Road LONG JETTY NSW

4 2 2

This magnificent near new residence is sure to impress with its sophisticated elegance, high-quality appointments and flowing contemporary layout. Beautifully crafted by a quality Builder with superior fittings that add a leading edge to single level executive living. Set privately to the rear in a peaceful location footsteps to the water's edge, this spectacular home provides the comfort and lifestyle few others can boast with nothing to do but move in and enjoy.

- Beautifully crafted with superior fittings, high ceilings, oversized windows; blackbutt flooring
- Privately set with neatly trimmed gardens on an easy-care level parcel of land
- Sprawling living spaces, lounge and dining flowing to the outdoor entertaining deck and garden
- Optional extra living space or 4th bedroom depending on

Type : House
Land Size : 543 sqm
View : <https://www.whitemanproperty.com.au/sale/nsw/central-coast-region/long-jetty/residential/house/7084196>



Brian Whiteman
02 4384 1349

[For full version visit the website](https://www.whitemanproperty.com.au)

<https://www.whitemanproperty.com.au>

