




# WHITEMAN PROPERTY



## 22A Eloora Road LONG JETTY NSW

3  3  2 

Every detail of this brand new designer property has been meticulously finished. It's brimming with natural light heightened by the fluid open plan layout together with a sunny north facing back garden. Conveniently located close to all the amenities of modern life and it's just a short level walk to both Blue Bay and Toowoon Bay beaches, shops and cafes.

- Double story family property with low maintenance landscaped gardens
- Tiled alfresco space includes a fire pit and an integrated shade awning
- Monochrome gas and granite kitchen includes stainless steel appliances
- Stylish bathrooms, ensuite includes a bath, louvre

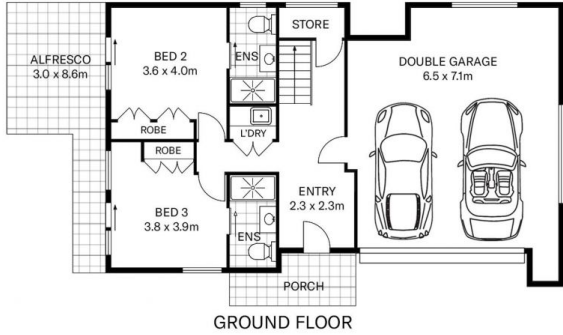
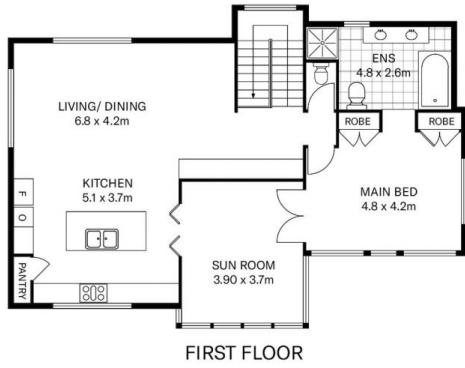
[For full version visit the website](https://www.whitemanproperty.com.au)

**Type** : House  
**Building Size** : 22 sqm  
**Land Size** : 345.8 sqm  
**View** : <https://www.whitemanproperty.com.au/sale/nsw/central-coast-region/long-jetty/residential/house/7084193>



**Brian Whiteman**  
02 4384 1349


<https://www.whitemanproperty.com.au>



INTERNAL FLOOR AREA 207 m<sup>2</sup>  
 LAND SIZE 345.8 m<sup>2</sup>



Indicative only. All dimensions and element positions are approximate. Information on this plan comes from sources we believe to be accurate, but its accuracy is not guaranteed. Interested parties should make and rely on their own inquiries

 22A Eloora Road Long Jetty NSW 2261

THE  AGENCY