

WHITEMAN PROPERTY



12 Rhodin Drive LONG JETTY NSW

3  2  3 

This beautiful entertainer's home has been meticulously renovated throughout with no expense spared, creating an open and inviting family haven. Set in a private circuit a short walk to beaches, shops, cafes, schools and The Entrance waterfront.

- Gorgeous white picket fence street appeal; landscaped gardens; tiled front terrace
- Elegant formal lounge; louvre windows; built-in cabinetry; plantation shutters; Tallowood select hardwood flooring
- Entertainer's kitchen with stone island bench ; walk-in pantry
- Casual living and dining space for family gatherings
- 3BR's w/ built-ins; opulent master with his/her robes, stunning ensuite and sliding doors to the deck

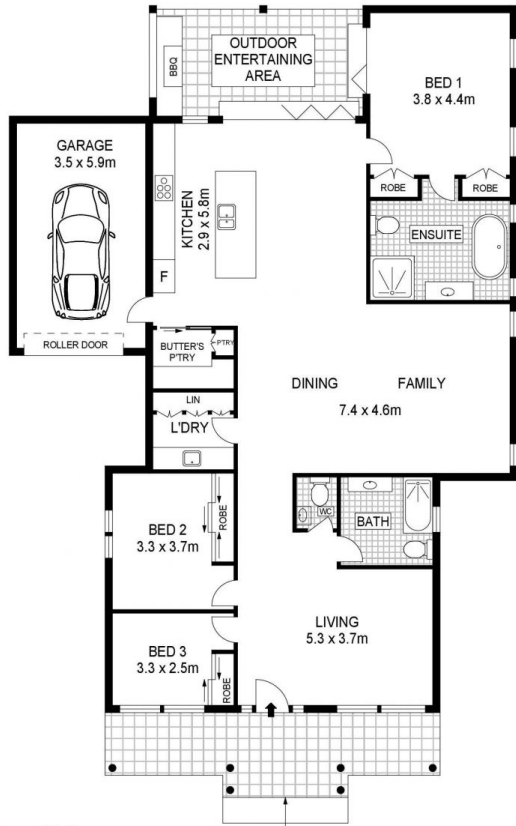
[For full version visit the website](https://www.whitemanproperty.com.au)

Type : House
Building Size : 18 sqm
Land Size : 556 sqm
View : <https://www.whitemanproperty.com.au/sale/nsw/central-coast-region/long-jetty/residential/house/7084189>



Brian Whiteman
02 4384 1349

<https://www.whitemanproperty.com.au>



INTERNAL FLOOR AREA 182 m²
 LAND SIZE 556 m²

Indicative only. All dimensions and element positions are approximate. Information on this plan comes from sources we believe to be accurate, but its accuracy is not guaranteed. Interested parties should make and rely on their own inquiries

 12 Rhodin Drive, Long Jetty

THE  AGENCY