

WHITEMAN PROPERTY



45 Elsiemer Street LONG JETTY NSW

4 1 1

Combining old world charm with modern enhancements this original cottage comprises a picturesque home boasting light filled interiors. Complimented by established gardens and perfectly set on a level block with an easy walk to Long Jetty for chic cafes and Tuggerah Lake to enjoy the walking/cycling path to The Entrance.

- Outdoor alfresco dining perfect for entertaining family and friends
 - Beautiful French doors lead to spacious verandah; combustion fire
 - Spacious fully fenced yard with plenty of space for the kids to play
 - Close to local beaches, chic cafes and boutique shopping.
- Zoning 2B
- Perfect for investors, renovators or downsizers,

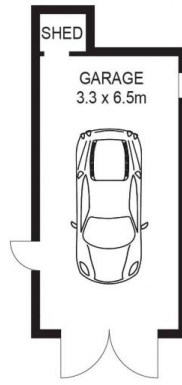
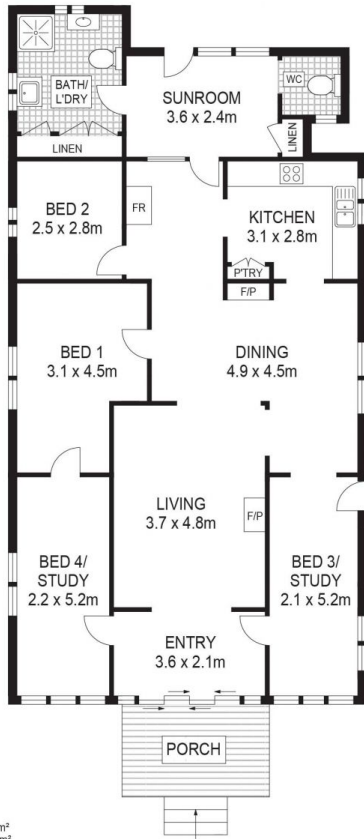
[For full version visit the website](https://www.whitemanproperty.com.au)

Type : House
Land Size : 677 sqm
View : <https://www.whitemanproperty.com.au/sale/nsw/central-coast-region/long-jetty/residential/house/7084007>



Brian Whiteman
02 4384 1349

<https://www.whitemanproperty.com.au>



SITE PLAN

INTERNAL FLOOR AREA - 149m²
 LAND SIZE - 677m²

Indicative only. All dimensions and element positions are approximate. Information on this plan comes from sources we believe to be accurate, but its accuracy is not guaranteed. Interested parties should make and rely on their own inquiries



 45 Elsiemer Street, Long Jetty

THE  AGENCY