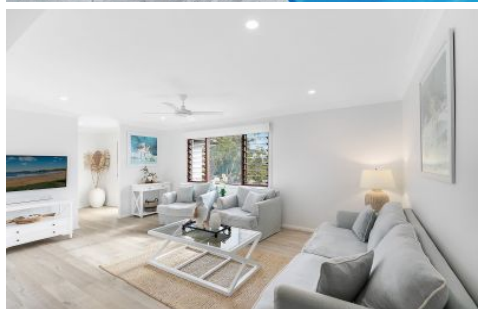


WHITEMAN PROPERTY



4 Wordsworth Avenue Bateau Bay NSW

4 🏠 3 🚗 2 🚗

Elevated on 601sqm of breathtaking land, with impressive street frontage, this gracious modern home offers expansive high-end comfort, that invites easy living and refined entertaining. Beautifully designed, great for all age groups, with a small studio adjacent to the pool area adding great versatility for families. Situated in the very popular Poet's Corner with a stunning vista, only a short distance to Wyrabalong Coastal Walk for nature lovers and Crackneck point lookout.

- Classic beach house facade with stunning street appeal
- The interiors have beautiful leafy outlooks, creating a blissful ambience
- Multiple living areas and superb alfresco entertaining terrace

[For full version visit the website](https://www.whitemanproperty.com.au)

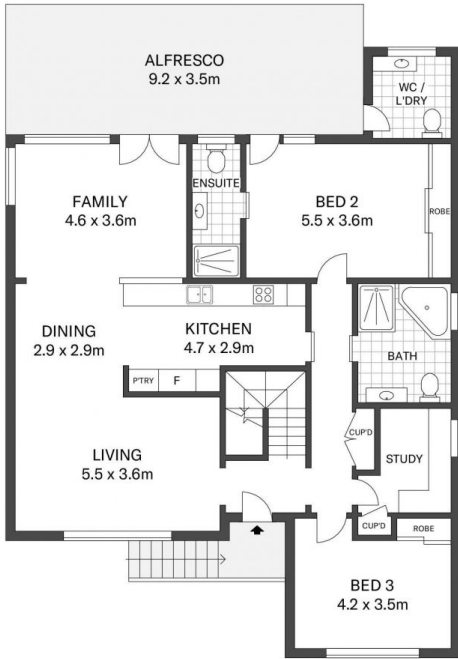
Type : House
Price : \$ 1,910,000
Land Size : 601 sqm
View : <https://www.whitemanproperty.com.au/sale/nsw/central-coast-region/bateau-bay/residential/house/7080485>



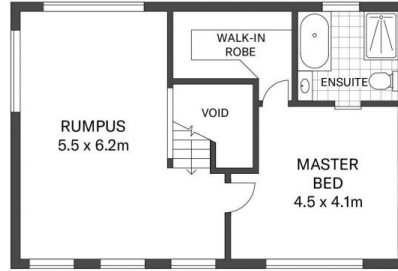
Brian Whiteman
02 4384 1349



Tony Trinder
0437 787 221



GROUND FLOOR



FIRST FLOOR



SITE PLAN

APPROX. INT: 206m²
 APPROX. OUT-BUILDING: 9m²
 LAND: 601m²



THE INFORMATION CONTAINED IN THIS DOCUMENT HAS BEEN PROVIDED BY THIRD PARTIES. THE AGENCY HAS NOT CHECKED THE INFORMATION AND MERELY PASSES IT ON, NOT HAVING A BELIEF ONE WAY OR THE OTHER AS TO ITS ACCURACY. INTERESTED PARTIES SHOULD MAKE AND RELY UPON THEIR OWN ENQUIRIES.

 4 Wordsworth Avenue, Bateau Bay

THE AGENCY