

WHITEMAN PROPERTY



6 Macauley Road Bateau Bay NSW

3  2  2 

This beautifully renovated beachside home provides the perfect lifestyle for families seeking a home with nothing to do but move in and enjoy.

Boasting chic updated interiors with an entertainer's kitchen and generous living space plus multiple entertaining areas, and a large studio/home office - perfect for working from home or extra living space/guest accommodation. Set in a sought after location, just 650m walk to Wyrabalong National Park and Crackneck lookout to watch the Whales go by.

- Lovely cottage street appeal that immediately impresses upon arrival
- Fantastic open plan gas kitchen with adjacent dining area
- Light and bright living areas flow seamlessly to the

[For full version visit the website](https://www.whitemanproperty.com.au)

Type : House
Price : \$ 1,220,000
Land Size : 558 sqm
View : <https://www.whitemanproperty.com.au/sale/nsw/central-coast-region/bateau-bay/residential/house/7073477>



Brian Whiteman
02 4384 1349

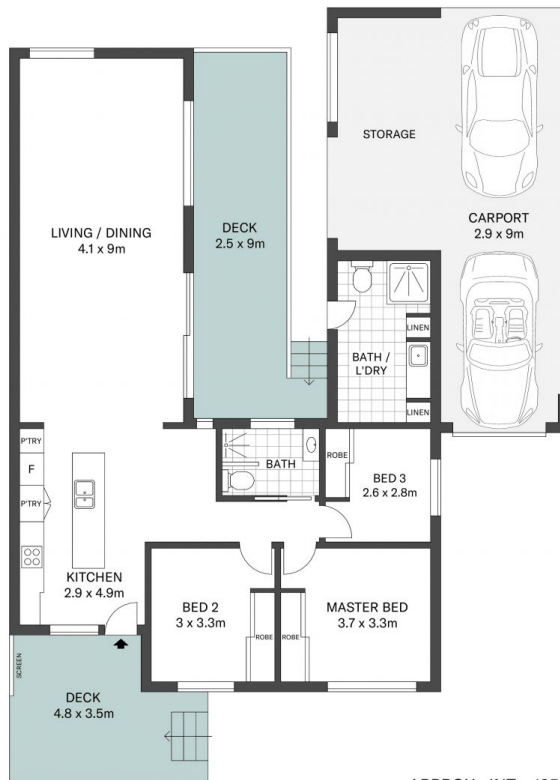


Simon Mitrovich
02 4384 1349

<https://www.whitemanproperty.com.au>



SITE PLAN



APPROX. INT: 125m²
LAND: 558m²



THE INFORMATION CONTAINED IN THIS DOCUMENT HAS BEEN PROVIDED BY THIRD PARTIES. THE AGENCY HAS NOT CHECKED THE INFORMATION AND MERELY PASSES IT ON, NOT HAVING A BELIEF ONE WAY OR THE OTHER AS TO ITS ACCURACY. INTERESTED PARTIES SHOULD MAKE AND RELY UPON THEIR OWN ENQUIRIES.

W 6 Macauley Road Bateau Bay

WHITEMAN
PROPERTY