

WHITEMAN

PROPERTY



495 The Entrance Road ERINA HEIGHTS NSW

2 1 10

Superb opportunity to purchase a sundrenched 2.5 acres of prime land in a fantastic central location close to schools, shops, and beaches. Currently leased to great tenants as a commercial office and machinery shed with wide street frontage and side access right through to the potential building block . Build your dream home (STCA) on this gently sloping block with stunning vistas amongst other quality acreages.

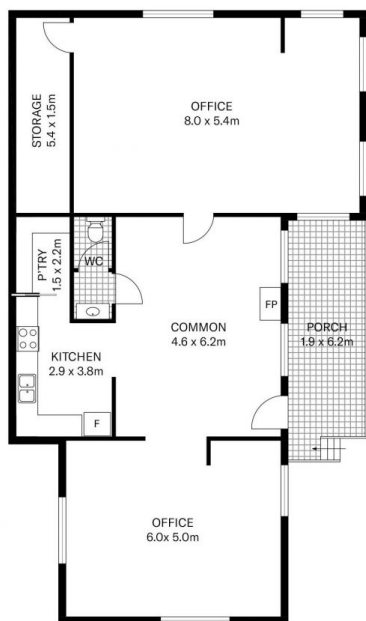
- Set on a north facing 2.5 acre parcel of gently sloping land
- Currently a three room cottage with two large office areas
- Common area plus full kitchen facilities with walk-in pantry
- 9.6x14m machinery shed with adjoining workshop; wc

[For full version visit the website](https://www.whitemanproperty.com.au)

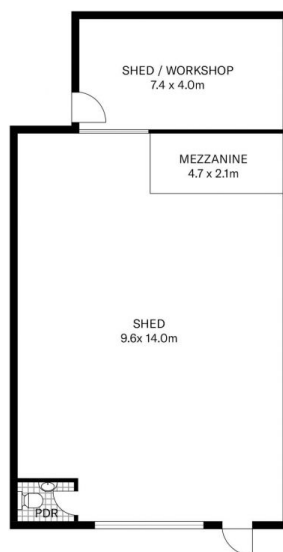
Type : Acreage/Semi-Rural
Land Size : 10170 sqm
View : <https://www.whitemanproperty.com.au/sale/nsw/central-coast-region/erina-heights/residential/acreagesemirural/7059665>



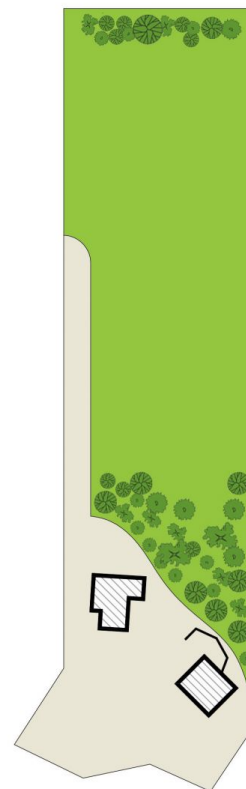
Brian Whiteman
02 4384 1349



FLOOR PLAN



FLOOR PLAN



SITE PLAN

INTERNAL FLOOR AREA 294m²
LAND SIZE 10170m²

Indicative only. All dimensions and element positions are approximate. Information on this plan comes from sources we believe to be accurate, but its accuracy is not guaranteed. Interested parties should make and rely on their own inquiries

 495 The Entrance Rd Erina Heights NSW 2260

THE  AGENCY