

# WHITEMAN PROPERTY



21 Yimbala Street Killarney Vale NSW

4  2  2 

This sensational near new home has been meticulously designed with a focus on quality, comfort and relaxed entertaining. Providing light-filled living spaces over one spacious level, that flow to the covered alfresco entertaining and landscaped gardens. Situated in a great location only a short walk to parks and lakefront reserve and a short drive to shopping centres and great beaches, including Shelly beach golf and surf club. This is a home for those seeking brand new luxury and a relaxed coastal lifestyle.

- Perfectly positioned on a sun-drenched north to rear block
- Stunning street appeal with landscaped gardens
- Vast open plan living and dining basking in natural light

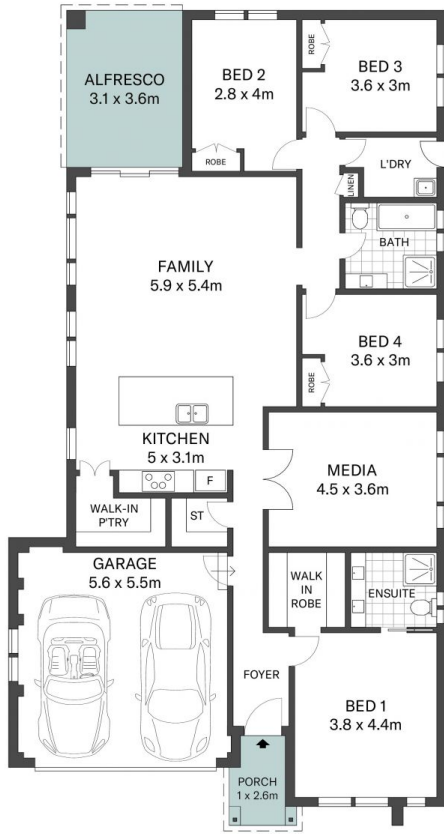
[For full version visit the website](https://www.whitemanproperty.com.au)

**Type** : House  
**Price** : \$ 1,375,000  
**Land Size** : 543.8 sqm  
**View** : <https://www.whitemanproperty.com.au/sale/nsw/central-coast-region/killarney-vale/residential/house/7016481>



**Brian Whiteman**  
02 4384 1349

<https://www.whitemanproperty.com.au>



SITE PLAN

APPROX. INT: 201.07m<sup>2</sup>  
 LAND: 543.8m<sup>2</sup>



THE INFORMATION CONTAINED IN THIS DOCUMENT HAS BEEN PROVIDED BY THIRD PARTIES. THE AGENCY HAS NOT CHECKED THE INFORMATION AND MERELY PASSES IT ON, NOT HAVING A BELIEF ONE WAY OR THE OTHER AS TO ITS ACCURACY. INTERESTED PARTIES SHOULD MAKE AND RELY UPON THEIR OWN ENQUIRIES.

**W** 21 Yimbala Street Killarney Vale

**WHITEMAN**  
 PROPERTY