



### 9 Felicia Close Tumby Umbi NSW

4 2 2

Situated on a large 625sqm corner block of land in a quiet friendly family cul-de-sac street, this very tidy brick and tile home provides accommodation and space for large families. Light and bright throughout with formal and informal living space, capturing a leafy district outlook. The single-level floorplan flows effortlessly to the rear entertainment deck, covered for year-round entertaining and a child and pet-friendly backyard with established gardens and low maintenance lawn. Perfect for families, first home buyers, or investors.

- Light and bright throughout with floor to ceiling windows showcasing a leafy outlook
- Very spacious family kitchen with stone benchtops and

[For full version visit the website](https://www.whitemanproperty.com.au)

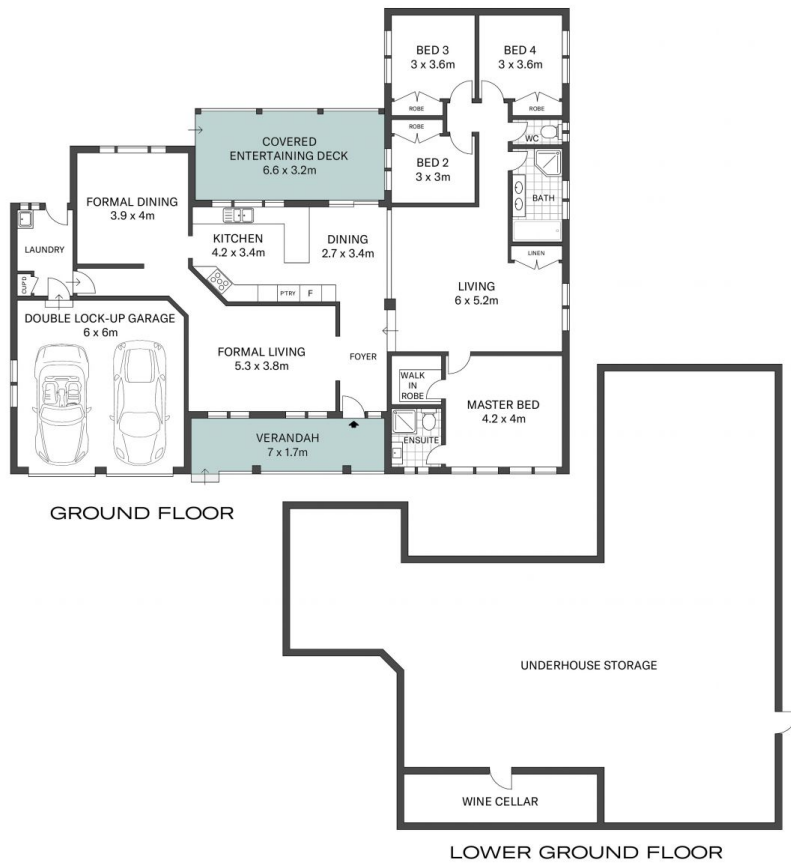
**Type** : House  
**Price** : \$ 1,150,000  
**Land Size** : 625 sqm  
**View** : <https://www.whitemanproperty.com.au/sale/nsw/central-coast-region/tumby-umbi/residential/house/7015010>



**Brian Whiteman**  
02 4384 1349



**Simon Mitrovich**  
02 4384 1349



APPROX. INT: 406m<sup>2</sup>  
LAND: 625m<sup>2</sup>



THE INFORMATION CONTAINED IN THIS DOCUMENT HAS BEEN PROVIDED BY THIRD PARTIES. THE AGENCY HAS NOT CHECKED THE INFORMATION AND MERELY PASSES IT ON, NOT HAVING A BELIEF ONE WAY OR THE OTHER AS TO ITS ACCURACY. INTERESTED PARTIES SHOULD MAKE AND RELY UPON THEIR OWN ENQUIRIES.



9 Felicia Close Tumby Umbi

**WHITEMAN**  
PROPERTY